

**7/29/2022 UPTREND – Market has broad-based rise: 3rd Accumulation day.**

**ARMCHAIR INVESTOR NEWSLETTER: THE MARKET'S MESSAGE**  
**A Powerful Trend-Following Strategy**

**MARKET's MESSAGE:** Market reclaims 12,000, showing strength

**Armchair Investor Trend-following Investment Position:**

**I hold the QQQ**

**Armchair Investor 2022 Returns:**  
 See ALL trades on page 8

**ACI Return for 2022 YTD:**  
**-21.2%**

Alternate Strategy: (**NOT Recommended!**)  
**BUY & HOLD QQQ:**

**“Buy & Hold” Return for 2022 YTD**  
**-20.8%**

**Your most important investing job is to FIRST ask this ONE QUESTION every day:**  
**How healthy is this market? Answer today: Showing new strength!**

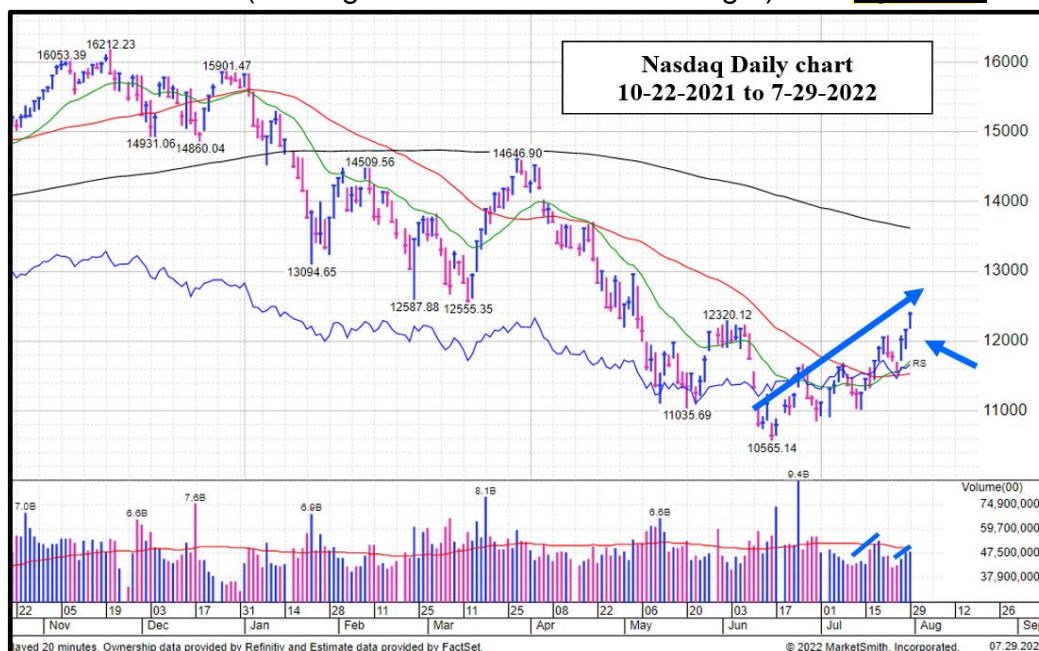
**>>>> Be sure to review the new article on page 6 about the extraordinary Accumulation/Distribution rating increases of this market!**

**Good news: The market reacted to Federal Reserve rate increase with SIGNIFICANT GAINS IN PRICES in MAJOR INDEXES and in TOP STOCKS topping !**

Note the long blue arrow showing how far the Nasdaq has risen since the June low (long blue arrow.) Also note the strong rise in the three most recent days on this chart. Add in the rising volume on the last 3 days -- you probably know those rising days are big accumulation days showing the market players are jumping in.

The price-volume action was strong enough to move the market diagnosis from “Uptrend under Pressure” (a rising market of uncertain strength)...to **Uptrend!**

I hope you find this price-volume action as exciting as I do. Has the market finally given up its correction and... Are institutional investors buying in? Let's find out how strong this current market really is!



What do you see happening in the enlarged graph below?



The answer to the 5/24 question about the large 3-day rise is.... “No!” It faltered, going sideways for 2 weeks before dying hard : 3 serious sick days – Note the long red bars – the gapped lower overnight – then closed at the bottom of each day.

Those 3 down days were the clearest “downtrend resumes” message I ever remember seeing.

### So why am I excited about the recent rise?

This time, the market did it right! From the June 16 bottom, the Nasdaq took off in four big steps higher. It climbed higher with steep (fast) gains. ‘the first two showed uncertainty -- the volume did not kick in. But with the third rise and especially the

fourth (most recent) rise, the volume kicked in. Friday even gapped up from Thursday's close – another sign of strength.

One more chart question I want to point out. Notice that Friday closed at the turquoise line. I drew that line on from the March 4, 2020 low at the bottom of the Pandemic crash. It always amazes me when I see a market stop at a predefined critical point two years later. Or maybe it is just a coincidence. Either way, I am watching for the Nasdaq to rise through the price on Monday.

DAILY MARKET ACTION					
7/29/22	Index Close	Index % Change	Volume % Change	Volume vs 50-day Avg.	Accumulation or Distribution Day?
Nasdaq	12,390.69	+1.9%	+0.9%	-4.4%	Major Accumulation
NYSE Volume used for S&P500 and DJIA					
S&P500	4,130.29	+1.4%	+5.1%	+0.7%	Major Accumulation
DJIA	32,845.13	+1.0%			Major Accumulation
<p>A <b>Major Accumulation Day</b>: Price RISES 1.0% or more with higher Volume than prior day.</p> <p>A <b>minor accumulation Day</b>: Price RISES at least 0.2% but less than 1% with strong Volume (either higher than the day before or is well-above average volume).</p> <p>A <b>Major Distribution Day</b>: Price FALLS 1.0% or more with higher Volume than the day before.</p> <p>A <b>minor distribution Day</b>: Price FALLS at least 0.2% but less than 1% with strong Volume (either higher than the day before or is well-above average volume).</p> <p>A "Neither" day: If the day's price/volume action does not meet the accumulation/distribution definitions above.</p>					

I don't know what Monday will bring but I am glad I am 100% in the QQQ right now.

Wishing you, "Many happy returns,"

Charlotte Hudgin, The Armchair Investor

Wishing you, "Many happy returns," Charlotte Hudgin, The Armchair Investor,  
[www.ArmchairInvestor.com](http://www.ArmchairInvestor.com)

Send YOUR COMMENTS and SUGGESTINGS to: [editor@ArmchairInvestor.com](mailto:editor@ArmchairInvestor.com)

>>>> The Armchair Investor newsletter is produced every day the market is open, as it has been for the last 20 years (I've missed less than 1 day a year on average) such as when I was traveling in jungles in South America, had no internet when cruise ship parked behind mountains in Alaska, flying across the Atlantic before on-flight internet, a few days too sick, 2 days computer problem. (Not a bad 21-year record!)



**Note the three Major Accumulation days on last Wednesday, Thursday and Friday.**

<b>MARKET ACTION (Nasdaq) OVER THE LAST 20 DAYS</b>							
#	Date	Closing Price	Index % Change	Volume % Change	Current Trend Day Count *	Accumulation, Distribution or Neither (—)	CONSISTENT WITH: UPTREND OR-DOWNTREND?
20	7/1/22	11127.85	+0.9%	-13.4%	6	----	----
19	7/5/22	11322.24	+1.7%	+1.4%	7	Major Accumulation	UPTREND
18	7/6/22	11361.85	+0.3%	-5.4%	8	----	----
17	7/7/22	<u>11621.35</u>	+2.3%	-2.6%	9	----	DOWNTREND
16	7/8/22	<u>11635.31</u>	+0.1%	-3.4%	10	----	----
15	7/11/22	11372.60	-2.3%	-4.0%	11	----	UPTREND
14	7/12/22	11264.73	-1.0%	-1.4%	12	----	UPTREND
13	7/13/22	11247.58	-0.15%	+3.2%	13	----	----
12	7/14/22	11251.19	+0.0%	+1.2%	14	----	----
11	7/15/22	11452.42	+1.8%	-2.8%	15	----	DOWNTREND
10	7/18/22	11360.05	-0.8%	+14.6%	16	Minor distribution	DOWNTREND
9	7/19/22	<u>11713.15</u>	+3.1%	+5.1%	17	Major Accumulation	UPTREND
8	7/20/22	<u>11897.65</u>	+1.6%	+3.5%	18	Major Accumulation	UPTREND
7	7/21/22	<u>12059.61</u>	+1.4%	-14.6%	19	----	DOWNTREND
6	7/22/22	11834.11	-1.9%	+2.4%	20	Major Distribution	DOWNTREND
5	7/25/22	11782.67	-0.4%	-11.2%	21	----	----
4	7/26/22	11562.57	-1.9%	+1.7%	22	Major Distribution	DOWNTREND
3	7/27/22	12032.42	+4.1%	+6.5%	23	Major Accumulation	UPTREND
2	7/28/22	12162.59	+1.1%	+6.2%	24	Major Accumulation	UPTREND
1	7/29/22	12390.69	+1.9%	+0.9%	25	Major Accumulation	UPTREND

Note how strong every rating on this page is.

Send YOUR COMMENTS and SUGGESTINGS to [editor@ArmchairInvestor.com](mailto:editor@ArmchairInvestor.com)

<b>MARKET FACTORS, COUNTS &amp; RATINGS</b>		<b>7/29/2022</b>	
Type of Day for <u>Nasdaq</u> Index		<b>Major Accumulation</b>	
Type of Day for <u>S&amp;P500</u> Index		<b>Major Accumulation</b>	
Market Direction		<b>Uptrend 25</b>	
<b>Nasdaq Accumulation &amp; Distribution Days (last 20 days)</b>		<b>Accumulation Days</b>	<b>Distribution Days</b>
Note: The 3 Distribution days occurred in the last 5 trading days and were all Major Distribution days. The 3 accumulation days occurred 10 to 19 trading days ago.		<b>6</b>	<b>3</b>
Count of Up Days and Down Days in last 10 days		<b>Up Days</b>	<b>Down Days</b>
		<b>6</b>	<b>4</b>
<b>Rising/Falling Ratio of Leader Stocks with High Volume</b> Nasdaq 10-day ratio		<b>1.7</b>	
The above indicator looks at the HEALTH of leading stocks (high RS rating) with strong financials (high EPS rating). Uptrend indicator: 1.5 or higher. Neutral: 1.0 to 1.49. Downtrend: less than 1.0			
<b>Market Accumulation/Distribution Ratings</b> "A": heavy accumulation, "B": moderate accumulation, "C": neutral, "D": moderate distribution, "E": heavy distribution. Accumulation = Institutions are BUYING, Distribution = Inst are SELLING		<b>Nasdaq</b>	<b>B</b>
		<b>S&amp;P 500</b>	<b>B+</b>
		<b>DJIA</b>	<b>B-</b>
<b>Are Major Indexes Above or Below Moving Averages?</b>		<b>50-Day</b>	<b>200-Day</b>
Nasdaq		<b>Above</b>	<b>Below</b>
S&P 500		<b>Above</b>	<b>Below</b>
DJIA		<b>Above</b>	<b>Below</b>
NYSE		<b>Above</b>	<b>Below</b>
"At" is within +/- 2% of the moving average.			

## A NEW LESSON ABOUT:

### THE ACCUMULATION and DISRITRIBUTION RATINGS.

What does this table tell the investor? It helps answer the very important question, “Is this stock being more heavily bought or sold?”

PROGRESS IN ACCUMULATION/DISTRIBUTION RATINGS of7STOCKS							
		A	B	C	D	E	As + Bs
4 weeks ago	6/30	5%	24%	22%	30%	19%	28%
3 weeks ago	7/8	5%	26%	22%	28%	18%	31%
2 weeks ago	7/15	5%	24%	22%	30%	20%	28%
1 week ago	7/22	6%	33%	24%	25%	11%	40%
Today	7/29	8%	39%	25%	20%	8%	47%
# stocks in each	Count:	610	3027	1953	1594	1684	7184

The Accumulation/Distribution ratings answer the question, “Are more investors are buying a stock or selling the stock?”

When there are more buyers than sellers, the buyers will have to offer a higher price to win the bid and the stock price rises!.

Thus, when a news release (or a rumor) with an optimistic view about a stock hits the news, buyers may jump in fast and push the stock price higher. (They believe today’s price is cheaper than tomorrow’s and next week’s price will be. They think they have bought a bargain (Why would any investor buy a stock for any other reason?) This stock is “under accumulation.”

But when the news is bad, some investors will sell the stock, thinking they may have gotten all the rise they can. If enough sellers hit the market, the price drops and the stock is “under distribution.”

Remember: The market does NOT care about your opinion of a stock. If you think the ABC is great buy it is falling, it’s you against the market!

How to read the ACCUMULATION/DISTRIBUTION rating:

- The top rising stocks have “A” ratings (and a “B” rating is still strong.)
- The worst falling stocks have “E” ratings (and a “D” rating points to weakness.)

Although every stock has its own Accumulation/Distribution rating, in this newsletter we are most interested in the consolidation of all the stocks to show how the investors see the whole market.

- An “A” rating shows a stock or the whole market is being heavily bought – it is “under accumulation.” Those stocks are more likely to rise in the near future.
- A “B” rating shows a moderate accumulation (buying) going on and can be also be a good sign for future price growth.
- A “C” rating shows balanced buying and selling with no clear signal about the future of the price.
- A “D” rating points to more selling of than buying – I expect price to drop.
- An “E” rating points to weakness and likely stalling or dropping prices.

**Where can you find the [Accumulation/Distribution ratings of the key indexes \(Nasdaq, S&P500 and DJIA\)?](#) Every night in this newsletter!**

And if you are a subscriber to Investors.com, you will find these ratings on the General Market Indicators link at the bottom of the daily Big Picture column. (One note, the General Market Indicator link is usually not available when the Big Picture come out (there are a lot of calculations to get every stocks Accumulation/Distribution rating, then combine them into the index ratings. Just try back later.)

The Accumulation/Distribution ratings of individual stocks are listed in the IBD Stock Checkup as well as many other IBD lists.

**Watch how the [Accumulation/Distribution ratings of the major indexes \(and your stocks\) change over time.](#)**

A market that had an “E” rating that rose to a “D”, then a “C” (as The Nasdaq, S&P500 and DJIA did Friday), shows significant new buyers are entering the market. (See the table below.) A rise to a “B” or “A” gives me comfort to consider buying that index or stock.

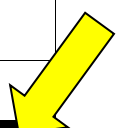
**A Sign of Strength in the Current Market:**

- In the last THREE weeks, the stocks with E ratings dropped from 20% to 9%. And the D stocks dropped from 30% to 22% in just 2 weeks.
- Meanwhile, the As + Bs rose from 28% three weeks ago to 43% yesterday! Finding stocks with strong Accumulation/Distribution ratings should not be hard. That rating is one of my critical requirements for buying a stock with strong prospects.



(WOW!) Today's rise in "A + B" accumulation ratings shows some serious buying. It does not guarantee the market is going to rise for months. But right now, the fast rise is good news.

PROGRESS IN ACCUMULATION/DISTRIBUTION RATINGS of 7 STOCKS							
		A	B	C	D	E	As + Bs
4 weeks ago	6/30	5%	24%	22%	30%	19%	28%
3 weeks ago	7/8	5%	26%	22%	28%	18%	31%
2 weeks ago	7/15	5%	24%	22%	30%	20%	28%
1 week ago	7/22	6%	33%	24%	25%	11%	40%
Today	7/29	8%	39%	25%	20%	8%	47%
# stocks in each	Count:	610	3027	1953	1594	1684	7184



One last important note about the Accumulation/Distribution table above (and something that is unique to the Armchair Investor newsletter.)

Look at the rightmost column in the table above. I have added up the stocks with A or B ratings. What does the As + Bs column tell us?

Both "A" and "B" indicate a stock is "under accumulation" and can be purchased (as long as it meets the other requirements.)

YOUR CONCLUSION MIGHT BE THE SAME AS MINE: This market is showing upward strength. This is the strongest price-volume action I've seen in months.

HOW CLOSE ARE THE INDICES TO ALL-TIME HIGHS?			
7/29/2022	Nasdaq	S&P500	DJIA
Date of Index All-time High*	11/22/2021	1/4/2022	1/5/2022
All-time High	\$16,212.23	\$ 4,818.62	\$ 36,951.69
Closing Price Today	\$12,390.69	\$4,130.29	\$32,845.13
Below (-) or Above (+) Recent High (%)	-23.6%	-14.3%	-11.1%

**NO ONE KNOWS THE EXACT MARKET TOPS AND BOTTOMS UNTIL AFTER THEY HAPPEN** (You can see them in the rearview mirror.)

>>> Sign up for the **NEXT FREE IBD Combined Dallas & Fort Worth Meetup on Wednesday August 31** 6:30 - 8:30 p.m. **ONLINE** event

Join us for the: the next

## Investor's Business Daily Meetup

I am looking forward to returning to LIVE, IN-PERSON DALLAS and FORT WORTH IBD monthly classes but I'd like a LIVE venue in both cities (usually held on the last Wednesdays and Thursdays of the month.)

- Who can check with the Pancake house in Fort Worth?
- Who can suggest a location in Dallas area – preferably north of downtown, or in Addison? pls call me (214) 995-6702

>>>>>> **CAN YOU SUGGEST A MEETING ROOM WITH WI-FI? IT COULD BE A FAVORITE RESTAURANT, LIBRARY, BUSINESS OR OTHER MEETING ROOM where we can meet for future IBD Meetups in Dallas?**

PLEASE LET CHARLOTTE HUDGIN KNOW. (214) 995-6702

Charlotte wrote: Since 2003, I have had the pleasure and honor of presenting the ARMCHAIR INVESTOR weekly classes and the monthly INVESTOR'S BUSINESS DAILY Meetups in Dallas and in Fort Worth.

A special "Thanks!" to all of you who support us, showing up early to set up the rooms, greet guests and the necessary food tasters at our Christmas parties (but not this year.) I look forward to enlisting your help when we start back with LIVE Meetups!— I especially thank you to:

- **Fred Richards** for his amazing market insights and presentations to the group. He is in the process of moving to a new home in the area and I expect to have him join us in the future.
- **Ron Shaw** for tirelessly greeting guests (one of the most organized, happy guys I know) and handing out the printed copies of the class notes.
- **And all the others** who greeted first time guests, substituted for Ron, found meeting space or stepped in at the last minute to find extension cords, extra tables and chairs, etc. etc. etc.
- The good news, with Wi-Fi, I plan on continuing the Online Meetups!
- It takes a village! Thank you.

Meetup dates change to avoid holidays in November and December



ARMCHAIR INVESTOR TREND-FOLLOWING RETURNS							
All 2022 Trades							
Date	Direction	Action	# Days in Trend	Price	% GAIN In 2022	\$100,000 Portfolio	
1	12/31/21	Uptrend	Hold the QQQ	6	Close: \$397.34	-----	\$100,000
	1/6/22	Uptrend under Pressure	Sold HALF of the QQQ at open	13	Open: \$382.42	-1.88%	\$98,123
2	1/19/21	DOWNTREND	Sold QQQ, Waiting in CASH	13	Open \$372.15	-3.21%	\$96,805
	1/28 – 2/2/22		Wait in CASH		(waiting in Cash)	-3.21%	\$96,805
3	2/3/22	Uptrend	Bot QQQ at 2/1 open	13	2/1 Open \$364.43	-2.91%	\$97,883
	2/13/22		Holding QQQ		Close \$356.04	-4.0%	\$96,026
	2/14 – 2/21/22	Uptrend under Pressure	Sold HALF of the QQQ at 2/18 open	8	2/18 Close 341.51	-4.0%	\$95,967
4	2/22/22	DOWNTREND	Sold 2nd HALF QQQ at open 100% >>CASH<<	23	2/22 Sold QQQ at 338.49 Waiting in Cash	-5.0%	\$95,003
	3/8/22		Bot 50% PSQ (Short Q)		3/8 Bot 50% PSQ at 13.03	-4.63%	\$95,368
	3/9/22		Back in 100% CASH		3/9 Sold 50% PSQ at 12.62	-6.2%	\$93,842
	3/15-3/16/22		Bot 50% PSQ Hold 50% CASH		3/15 Bot 50% PSQ at 13.15	-9.0%	\$90,974
5	3/17-4/10/22	Uptrend	3/17 At Open: Sold PSQ, Bot QQQ	25	3/17 Hold QQQ	-4.5%	\$95,525
	4/11/22-4/21	Uptrend under Pressure	Hold 50% QQQ	11	4/11 Sold 50% of QQQ (50% QQQ, 50% cash)		
6	4/22-5/17/22	DOWNTREND	Wait in CASH	28	4/22 Sold QQQ -- waiting in CASH	-4.4%	\$94,414
7	5/18-5/20/20	Uptrend	Hold QQQ	3	5/23 Bot QQQ at open	-9.2%	\$90,805
8	5/23-5/30/22	DOWNTREND	Wait in CASH	8	5/23 Sold QQQ at open	-8.4%	\$91,560
9	5/31-6/13/22	Uptrend	Hold QQQ	13	5/31 Bot QQQ at open	-11.5%	\$88,451
10	6/13-6/23/22	DOWNTREND	6/13 sold QQQ at open 6/14 Bot PSQ	11	6/13 Sold QQQ at open 6/14 bought PSQ at open	-16.6%	\$83,397
11	6/24-6/27/22	UPTREND	Sld PSQ, Bot QQQ at 6/27 Open	4	6/24 Sold PSQ, Bot QQQ	-20.7%	\$79,342
	6/28-7/20	Uptrend under Pressure	Sold QQQ 6/28 Wait in CASH	23	6/28 Sold QQQ, waiting in CASH	-20.6%	\$79,552
	7/21-7/25		Bot QQQ at open	5	7/21 Bot QQQ at open	-21.3%	\$78,268
	7/26-27		Sold QQQ at open	2	Sold QQQ at 7/26 open	-21.7%	\$77,814
12	7/29	Uptrend	Bot QQQ at open	1	Bot QQQ at 311.38	-21.2%	\$78,834
This table counts calendar days not trading days		<b>TOTAL Growth in 2022:</b>			<b>-21.2%</b>	<b>\$78,834</b>	

The Armchair Investor strategy earned an outstanding 55.5% gain in 2020. (See all trades in 2020 below). It's all about understanding the market direction signals! I'll teach

you! Note: The ArmchairInvestor positions and trades are published nightly in this newsletter to be traded the next morning.

ARMCHAIR INVESTOR TREND-FOLLOWING RETURNS								
All Trades In 2020								
Market Direction Signal Change	Direction	Action	# Days	Price	% GAIN – Each Trend (See note)	Armchair Investor GAIN In 2020	Value of \$100,000 Portfolio	
Trade	12/31/19	<b>Uptrend</b>	Hold the <b>QQQ</b>	55	\$212.61	+4.3%	<b>+4.3%</b>	<b>\$100,000</b>
1	2/24/20	Uptrend under Pressure	<b>Sold</b> <b>QQQ</b> at Open Wait in <b>CASH</b>	3	\$221.84	0%	+4.3%	<b>\$104,341</b>
2	2/27/20	<b>Downtrend</b>	<b>Bot</b> <b>PSQ</b> at Open	38	\$24.65	+5.6%	<b>+10.2%</b>	<b>\$110,183</b>
3	4/6/20	Attempted Uptrend	<b>Sold</b> <b>PSQ</b> at Open Wait in <b>CASH</b>	2	\$26.03	0%	+10.2%	<b>\$110,183</b>
4	4/8/20	Uptrend	<b>Bot</b> <b>QQQ</b> at Open	155	\$198.08	+39.1%	<b>+53.3%</b>	<b>\$153,270</b>
5	9/9/20	Uptrend under Pressure	<b>Sold</b> <b>QQQ</b> at Open Wait in <b>CASH</b>	9	\$275.54	0%	+53.3%	<b>\$153,270</b>
6	9/18/20	<b>Downtrend</b>	<b>Bot</b> <b>PSQ</b> at Open	13	<b>\$17.01</b>	-4.1%	<b>+47.0%</b>	<b>\$146,963</b>
7	10/1/20	Attempted Uptrend	<b>Sold</b> <b>PSQ</b> at Open Wait in <b>CASH</b>	1	\$16.31	0%	+47.0%	<b>\$146,963</b>
8	10/2/20	Uptrend	<b>Bot</b> <b>QQQ</b> at Open	27	\$276.01	-1.1%	<b>+45.4%</b>	<b>\$145,381</b>
9	10/29/20	<b>Downtrend</b>	<b>Sold</b> <b>QQQ</b> at Open Wait in <b>CASH</b>	27	\$273.04	0%	+45.4%	<b>\$145,381</b>
10	11/5/20	Uptrend	<b>Bot</b> <b>QQQ</b> at Open	7	<b>\$293.41</b>	0%	+45.4%	<b>\$145,381</b>
11	11/13/20	Uptrend under Pressure	<b>Sold</b> <b>QQQ</b> at Open Wait in <b>CASH</b>	4	<b>\$290.01</b>	-1.2%	<b>+43.6%</b>	<b>\$143,613</b>
12	11/17/20	Uptrend	<b>Bot</b> <b>QQQ</b> at Open	--	<b>\$398.04</b>	+0%	+45.4%	\$143,613
	12/31/20	Uptrend	<b>Hold the</b> <b>QQQ</b>	44	<b>\$386.84</b>	+6.9%	<b>+55.5%</b>	<b>\$155,460</b>
<b>TOTAL. Growth in 2020:</b>							<b>+55.5%</b>	<b>\$155,460</b>

The returns listed in this part of the newsletter are from actual trades made day-to-day in this newsletter.



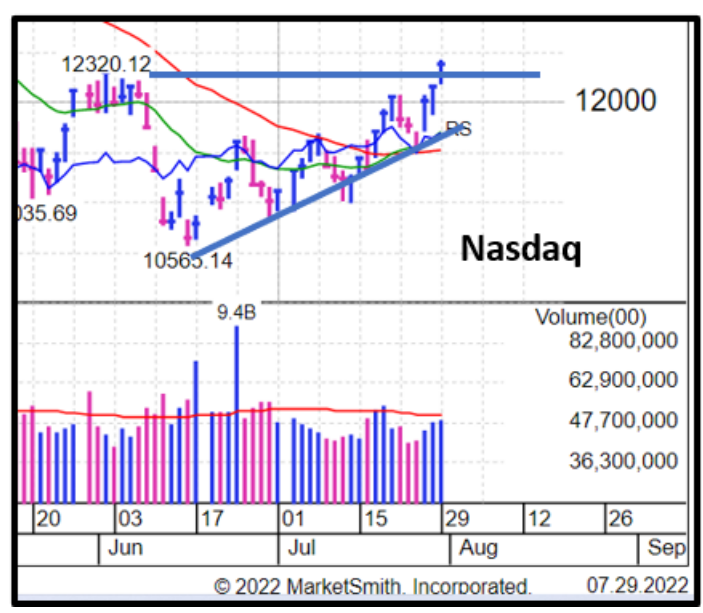
ARMCHAIR INVESTOR TREND-FOLLOWING RETURNS							
All Trades In 2021							
	Date	Direction	Action	Trend # Days	Closing Price	% GAIN In 2021	\$100,000 Portfolio
Trade	12/31/20	Uptrend	Hold the QQQ	63	\$313.74	-----	\$100,000
1	3/4/21	Uptrend under Pressure	Sold HALF the QQQ at open	1	\$308.78	-1.8%	\$98,086
2	3/5/21	DOWNTREND	Sold 2 <sup>nd</sup> HALF of QQQ, Wait in CASH	10	\$306.80		
3	3/15/21	Uptrend	Bot HALF QQQ at open	1	\$313.86	-----	\$99,263
	3/16/21		Bot HALF QQQ at open	13	\$321.09		
5	3/29/21	Uptrend under Pressure	Sold QQQ Wait in Cash	3	\$315.45	-1.4%	8\$98,628
6	4/1/21	Uptrend	Bot QQQ at open	40	\$323.07	-----	8\$98,628
7	5/11/21		Sold QQQ	2	\$319.70	-2.4%	\$97,642
			Bot SPY		\$413.10	----	\$97,642
8	5/13/21	Uptrend under Pressure	Sold HALF of SPY at 5/13 open	1	\$405.71	-4.6%	\$95,592
9	5/14/21	Uptrend	Bot Half position in SPY at open, holding 100% SPY	27	Bot at 407.07	-----	\$95,752
10	6/10/21		Sold SPY at Open	46	\$422.96	-----	\$102,081
			Bot QQQ at Open		Bot \$337.19 EOD\$340.35	+3.0%	\$103,038
11	7/16/21		Sold QQQ Wait in Cash	36	\$354.05	+7.5%	\$107,500
12	7/22/21	UPTREND under Pressure	Bot Half QQQ position at open	5	\$361.77	-----	\$107,500
			End of Day QQQ		\$363.95	+7.7 %	\$107,740
	7/23/21		Holding Half QQQ		\$368.20	+8.4%	\$108,444
13	7/27/21	Uptrend	Bot 2 <sup>nd</sup> Half of QQQ at open	65	\$367.49	-----	\$108,444
		Uptrend under Pressure	Holding QQQ		\$368.49	+8.6%	\$108,618
14	9/30/21	DOWNTREND	Sell QQQ at Open Waiting in CASH	14	10/1 Open Price358.60	+5.8%	\$105,783
15	10/14/21	Uptrend	Bot QQQ on 10/14 open	49	Bot: 363.69 and 393.82	+13.3	\$113,335
16	12/3/21	Downtrend	Holding CASH	13	Wait in Cash	+13.3%	\$113,335
17	12/16/21	Uptrend	Bot QQQ at 12/16 open	15	Bot: 398.04	----	\$113,335
	12/31/21		Bot QQQ at 12/28 open		Bot: 398.25 12/31:397.85	+9.5%	\$109,458
This table counts calendar days not trading days			<b>TOTAL Growth in 2021:</b>			<b>+9.5%</b>	<b>\$109,458</b>



## Current Signs of Market Strength as of 7/29/2022

This list is updated on Fridays (and occasionally in between *as time allows.*)

- The Nasdaq has risen 17% above the recent low of 10,565.14.
- I am holding a 100% position in the QQQ.
- The Nasdaq and S&P500 have a strong B and B+ chart ratings (indicating strong buying.)
- Finally! The Nasdaq rising days are showing strength as the rising days close at the top of the day's range.



## Current Signs of Market Weakness

- Barring unexpected bad news, I expect the market to rise on Monday. But will the prior high (in this area) of 12,320 level hold it back?

## WHAT HAPPENED LAST WEEK

**7/22/2022 WEEKLY SUMMARY:** The market ended the week UP 1.8% for the Nasdaq, the major index tracked most closely by this newsletter. This is the index on which you will earn the largest returns over time. But sometimes the S&P500 outperforms the Nasdaq.

LAST WEEK'S DAILY MARKET ACTION						
	MONDAY	TUESDAY	WEDNESDAY	THURSDAY	FRIDAY	FOR THE WEEK
	7/25	7/26	7/27	7/28	7/29	
<b>Nasdaq</b>	-0.4%	<b>-1.9%</b>	+4.1%	+1.1%	<b>+1.9%</b>	<b>+5.2%</b>
<b>Volume</b>	-11.2%	+1.7%	+6.5%	+6.2%	+0.9%	
<b>Type of Day</b>	Neither	<b>Major Distirbution</b>	Major Accumulation	Major Accumulation	Major Accumulation	
<p><b>A Major Accumulation Day:</b> Price RISES at least 1.0% or more with higher Volume than prior day.  <b>A Major Distirbution Day:</b> Price FALLS at least 1.0% or more with higher Volume than the day before.  <b>A Minor accumulation Day:</b> Price RISES at least 0.2% and less than 1% with strong Volume (either higher than day before or is well-above average volume).  <b>A Minor distribution Day:</b> Price FALLS at least 0.2% and less than 1% with strong Volume (either higher than the day before or is well-above average volume).  <b>A Neither day:</b> Price/volume action does not meet accumulation or distribution criteria</p>						

MARKET ACTION 2022 YEAR-TO-DATE			
7/29/22	2021 Closing Price	Current Price	2022 Gain %
<b>Nasdaq</b>	<b>15644.97</b>	<b>12390.69</b>	<b>-20.8%</b>
<b>S&amp;P 500</b>	<b>4766.18</b>	<b>4130.29</b>	<b>-13.3%</b>
<b>DJIA</b>	<b>36338.30</b>	<b>32845.13</b>	<b>-9.6%</b>

**REMEMBER:** Please tend to your individual stocks daily!

At the beginning of a new Uptrend is the opportunity to catch some of the potential big winners of the next trend! Watch for the stocks highlighted in: the *Big Picture* column, the Stock Market Today article, and videos for both! Stocks mentioned in “IBD Live!,” stocks highlighted in MarketSmith and all the other IBD articles and presentations.

**I am looking forward to the LIVE Dallas and Ft Worth Armchair Investor and IBD Meetups, but not yet!**

At the end of 2020. Charlotte wrote:

Since 2003, I have had the honor of presenting the ARMCHAIR INVESTOR weekly classes and the monthly INVESTOR’S BUSINESS DAILY Meetups in Dallas and in Fort Worth.

A special “Thanks!” to all of you who support us, showing up early to set up the rooms, greet guests and the necessary food tasters at our Christmas parties (but not this year.) I look forward to enlisting your help when we start back with LIVE Meetups!—

I especially thank you to:

- **Fred Richards** for his amazing market insights and presentations to the group. He is in the process of moving to a new home in the area and I expect to have him join us in the future.
- **Ron Shaw** for tirelessly greeting guests (one of the most organized, happy guys I know) and handing out the printed copies of the class notes.
- **Nick Pollard** for setting up so many great restaurant meeting rooms. (RIP)
- **And all the others** who greeted first time guests, substituted for Ron, found meeting space or stepped in at the last minute to find extension cords, extra tables and chairs, etc. etc. etc.
- The good news, with Wi-Fi, I plan on continuing the Online Meetups!
- It takes a village! Thank you.

**Join the next combined Dallas and Fort Worth Investor’s Business Daily’s ONLINE Meetup 6:30 – 8:30 p.m. usually on the fourth or last Wednesday of each month. Watch out! Meetup dates change to avoid holidays in November and December.**

**Register below. This are one combined ONLINE Meetup:**

Register either way for the same Meetup.

- Register for the [Dallas IBD Meetup](#)
- Register for the [Fort Worth IBD Meetup](#)

===== **YOUR ASSIGNMENT:**



## In an Uptrend:

- (1) If you follow the Armchair Investor, you know to **have a position in the QQQ to follow the rising market.** (It's not too late to grab this trend-following position. I hold a QQQ position in every uptrend. Yes, I go to cash in uncertain markets, and very occasionally the inverse PSQ to make money during a powerful downtrend)
- (2) Next **build your watch list of top stocks** with strong ratings, ready to break out of well-formed bases (or recently broken out of bases or other buy points). Avoid the desire to jump in early. There are so many stocks making good moves with great financials now, you don't have to compromise your rules.
- (3) **If you have identified a strong stock (ratings, charts, etc.) that is breaking out,... it may be time to buy a position in these best stocks.** As of this writing, the market is in an Uptrend which says you should be looking for the best stocks, at the right time to add to your portfolio.

## In a Downtrend:

- (1) If you follow the Armchair Investor, you know to have either a position in CASH or in the **inverse ETF** (PSQ) according to this newsletter's instructions. (Note: Many Downtrends are weak and rebound quickly – sometimes in less than a week – when it is safer just to wait in CASH. You will find instructions in the first few pages of this newsletter.

**Note: In an Uptrend, I rarely own more than 5 individual stocks plus a trend-following position – usually in the QQQ. If you could own the best 5 stocks, why would you want to own more? Owing more is OK as long as you have the time to track each stock daily. With a little practice, this daily review can be accomplished in 10 minutes or less.**

**In a Downtrend, I am usually 100% in CASH or 50% to 100% in the PSQ (inverse ETF). Downtrend can start and end quickly. Sometimes, CASH is the safer position unless I expect the Downtrend to last.**

**Charlotte Hudgin, The Armchair Investor**

## THE NASDAQ UPWARD AND DOWNWARD CHANNELS

One of the features I like about [Investors.com's MarketSmith charts](#) is that I can draw in my own channel lines.

Did you know annotations stay on the MarketSmith charts! Bravo to the designers. My notations will stay on the MarketSmith charts for years! I can go back and visit how I saw the market in 2000, 2008, 2015-16, etc.

That is one of MarketSmith's many truly unique and valuable features! I don't have to figure out what happened in those past periods again. My annotations are there! Vertical red lines identify distribution days (down days with higher volume indicating serious selling.)

**>>>> I HIGHLY RECOMMEND IBD's MarketSmith** for your investing CHARTS! Note the excellent annotations and markups I have added on the chart below.

All MarketSmith charts include a bumpy blue horizontal line that compares how the price of this financial instrument (stock, ETF, etc.) rises and falls compared to the S&P500. With this valuable tool, you can see if the financial (I'll call them "stocks" for the rest of this article) instrument you are exploring is outperforming or underperforming the S&P500.

**MarketSmith is my favorite charting system**, available ONLY on INVESTORS.COM.

**REMEMBER: BUY & HOLD IS NOT A STRONG INVESTING STRATEGY.**

**An EXAMPLE OF HOW "BUY-AND-HOLD" COSTS YOU BIG BUCKS.**

- Over 2020, a "buy and hold" strategy has earned 16.2% for the S&P500.
- "The Armchair Investor" worked better earning 55.5%.

### SHOWING WHAT THE "BUY AND HOLD" STRATEGY PAID OFF OR COSTS THUS FAR IN 2022 – **NEVER RECOMMENDED!**

7/28/22	2021 Closing Price	Current Price	2022 Gain %
Nasdaq	15644.97	12162.59	-22.3%
S&P 500	4766.18	4072.43	-14.6%
DJIA	36338.30	32529.63	-10.5%

**Also note: If you invested with the Armchair Investor strategy in 2020 and 2021, you were UP 69.7% over those two years!**

Imagine the difference in returns in the chart above if you had just sold your market ETF and waited in cash as the market fell, then got back in as it started back up – following this newsletter's instructions!

- It isn't necessary to get in at the bottom or out at the top. Just stepping out of the market somewhere *near the top* and getting back in *near the bottom* has had a HUGE IMPACT on my portfolio.

## **DO YOU MAKE THESE INVESTING MISTAKES?**

- **Do you miss buying a great stock at the price you knew was right?**
- **Do you sell too early and watch it continue to rise without you?**
- **Do you hold on too long and lose the gains you just had?**
- **Or are you just starting out** and want a simple, proven method that has outperformed the market in just 5 minutes a day?
- Either way, we have an ARMCHAIR INVESTOR class for you!

## **PICK THE ARMCHAIR INVESTOR ONLINE CLASS THAT'S RIGHT FOR YOU:**

**Be sure to register for you classes – occasionally they change.**  
**No Tuesday class this week. Register by clicking the BLUE LINK at the bottom of this page.**

### **SUNDAY'S 5-Minute Investor with Market Analysis.**

This 1-hour class about Market Direction is foundational – If you get the market direction wrong, you are much more likely to lose money. Attended by beginners and experts alike. FREE to all (at the moment). Once you learn this strategy, it's yours for life!

### **3 TIMES A WEEK Armchair Investor Workshops**

Learn how to buy the best stocks at the right time. And then, learn how to track them to identify the right time to take your profits to the bank!

Choose the BEST CLASS for you: Join us on **MONDAY** 7 – 9 P.M. **Tuesday** 2:30 – 4:30 p.m. or **Wednesday** (10 a.m. – noon) for an [online Armchair Investor class](#)

<<. Are you new to the Armchair Investor classes? **Visit for 2 weeks FREE as my guest!** Call or text me at 214-995-6702 to let me know you are coming.

**[Click here to register for 2 weeks of FREE Armchair Investor Online Classes](#)**

## **VISIT THE ARMCHAIR INVESTOR ONLINE CLASS THAT IS RIGHT FOR YOU:**

<<. Are you new to the Armchair Investor classes? **Visit for 2 weeks FREE as my guest!** Please call or text me at 214-995-6702 to let me know you are coming. Here is why you should visit.

### **SUNDAY: Learn to be a 5-Minute Investor!**

**This strategy has earned over 55% last year – following my 9 trades.**

The weekly 1-hour class about Market Direction is foundational – If you get the market direction wrong, you are much more likely to lose money. This bi-weekly class is attended by beginners and experts alike. Open to all (at the moment). We meet every-other Sunday with some adjustments around holiday weekend, and other events.

Join us by registering on this link: [online Armchair Investor class.](#)

### **TUESDAY, WEDNESDAY or THURSDAY Armchair Investor Stock analysis 2-HOUR CLASS**

This class is given 3 times each week. Choose the BEST TIME for you: Join us on Tuesdays 2:30 – 4:30 p.m. or Wednesdays 10 a.m. – noon or Thursdays 6:30 – 8:30 for an [online Armchair Investor class](#) Be sure to check for the date your wish to visit. The class meets 11 weeks each quarter (2 weeks off for research, study and fun).

To join us for a class, click here: [online Armchair Investor class](#)

Once you register online – the link to your online meeting will be revealed on the Armchair Investor Meetup site. Be sure to note the PASSCODE! When you register for an online Armchair Investor class, suggest a few stocks to review in the class! Please choose profitable growing stocks. *If you own a stock and are considering SELLING THAT STOCK, please note “SELL?” after the ticker.*

## **MARKET/CHART READING LESSON:**

### **The MarketSmith Relative Strength Line – My favorite!**

Go to any chart on the Investors.com web page. You will see the bumpy line labeled RS for Relative Strength. This line moves up or down with each price bar showing if this stock or index rose more or less than the S&P500.

Look at the Nasdaq daily chart (0NDQC) and notice that the RS line has risen since the Oct 2019 low, indicating it has earned higher returns.

Go to the monthly chart and note that the S&P500 has consistently outperformed the S&P500 (not ever month but most). The S&P500 does have some great stocks. That rising RS line tells us that, over time, the Nasdaq as a whole has done better than the S&P500. But just like shopping for groceries, I will buy from the market that has the best fruit, on any given day.

The Nasdaq continues to outperform the S&P500. Watch the RS line on Investors.com charts. This important line shows you how a stock or index is performing compared to the S&P500. A rising line indicates that stock or index has risen faster than the S&P500 (measured in percentage change.)

Note: Do not confuse IBD's RS line with the RSI line some charting system use. The S measures how a stock is moving compared to the S&P500. Rising faster gives a higher rating. *Investopedia.com states: The relative strength index (RSI) is a momentum indicator that measures the magnitude of recent price changes to evaluate "overbought" or "oversold" **conditions** in the price of a stock or other asset.*

*The problem I have found with the RSI line is that some of the best, rising stocks can push an RSI line to the top of the rating (indicating overbought) just when I have a buy signal. As always, I tell you to use the indicators you find useful (profitable).*

I am excited about the settling down in market volume. But **I continue to be concerned about the sustained day-to-day price volatility.** It is surely affected by the uncertainty of the upcoming earnings announcements. **BE SURE YOUR STOPS ARE IN PLACE.**

**Every Day's Lesson: Whether you agree with your stock's daily results or not...**

- **YOUR JOB is to monitor its daily results and adjust your action accordingly.**
  - **Monday: Monitor.....and.....adjust.**
  - **Tuesday: Monitor.....and.....adjust.**
  - **Wednesday: Monitor.....and.....adjust.**
  - **Thursday: Monitor.....and.....adjust.**
  - **Friday: Monitor.....and.....adjust.**
  - **Next week: (repeat)**

## **KEY MARKET CONCEPTS USED IN THIS NEWSLETTER**

**If the horse you are riding, dies.... GET OFF!**



When the market (or your stock) dies – whether that is in a year, a month or tomorrow, the Armchair Investor Strategy will NOT “stay the course” and we won’t ride a falling market down.

Instead, we will use our 20 years of market direction experience to identify optimum times to be in the market and times to be out of the market. (No guaranties!) (PS I love horses. They are amazing companions.)

Using my day-to-day price-volume analysis, my students and I have consistently been able to make money by:

“Getting IN near the bottom” and “Getting OUT near the top.”

The Armchair Investor strategy has allowed me to earn well-above-average returns since the 2000 top! And this year took a big hit in the first 2 1/2 months but it has now shown good upward growth!

## “Knowledge is Power”

### THE LESSON: Riches await the patient investor.

The start of 2021 was volatile for the **Nasdaq**: A rising month and a half, taking it all and more back in the next month, rising to the prior high over the next 2 months, giving back most of it in the next 2 weeks. The reward for your patience was the 2-month rise of 13.1%. The half year results: +14.1%; **now UP 17.1%**.

Meanwhile, the slow but steadily rising **S&P500** beat the Nasdaq, **now +21.0%**.

Notable: All indexes had admirable half-year returns!

The Lesson: **Occasionally, the S&P500 wins.**

## **Prepare yourself for a NEW ECONOMY!**

I expect a major shift in how we do business: more online appointments, more working from home, reduced business travel (with reduced costs to businesses) We might actually see this lockdown period as **a slingshot into a new, sleeker way of conducting business. And each of those new trends will help some businesses excel with online meetings, internet providers, online schools, casual clothing, healthy ready-to-eat food....**

**>>>>>>>> I would like to hear your ideas of where the big gains will occur!**

**Which industry groups and specific companies will thrive and?  
which will dive in the after pandemic new economy???**

**WILL HISTORY REPEAT ITSELF?** In the financial crisis of 2007, it took the market 2 1/2 years to recover the 56% drop. Worse yet was the reaction to the dot.com 90's market over-inflation that crashed in March of 2000 and took 19 years for the market to "break even."

WHAT CAN WE (INDIVIDUAL INVESTORS) DO NOW? ONE lesson I have learned from every greatest investor I have studied:

### **HUMAN NATURE DOESN'T CHANGE.**

**That is why the cups and handles, double bottoms, etc. continue to work.**

**HUMAN NATURE DOESN'T CHANGE.** Human's nature is to survive and we are, therefore, fear and greed driven. And that is what cups and handles, double bottoms, etc. are all about.

**Stick with the Armchair Investor non-emotional, fact-based analysis to ride the market as it rises and exit as it falls. I have never been ashamed of exiting a failing market or stock.... or of riding a winner up, no matter what "they" say.**

**A SIMILAR TIME IN HISTORY** I've been looking for past examples and see a close one in 1998: a 33% drop during the "dotcom" rally in 1998, Everyone was sure 1998 was the top and got out. When it turned around, they all jumped in again.

When the 2000 crash occurred, their brokers told them to stay in because, "...It always comes back! Just look at 1998. When this market fails, I will just say, "GET OUT."

**Reminder: I do not make recommendations - just ideas to consider.**

**CALL ME IF YOU ARE STUCK! Charlotte – 214-995-6702**

**>>>With Covid out there, I'm just hanging around the house,  
waiting for your call!**

**BONUS CHART-READING HISTORY LESSONS:**

Look at a Nasdaq or S&P500 daily chart as it crashed off the February 2020 all-time highs. (Charts are at the end of this newsletter.)

Notice the DOWN-TRENDING pattern of:

- frequent higher volume DOWN days (serious selling) and
- frequent lower volume UP days (lack of commitment to the upward move).

**NOW NOTICE A SHIFT IN the PRICE-VOLUME PATTERN AS THE MARKET SLOWED DOWN AND THEN STARTED RISING:**

- More consecutive rising days with higher volume (Nasdaq)
- A fresh upward move of 4 rising days in a row (Nasdaq)
- Those moves in the last week bring hope that this Uptrend is gathering steam AND it brings a concern that irrational exuberance may be driving this Uptrend.
- EITHER WAY – I am happy to ride this Uptrend until it dies... next week, next month or next year. **STAY TUNED!**

This “change in personality” is common when a Downtrend becomes an Uptrend.

**DISTRIBUTION DAYS:** >>> Scan across the volume over the last four weeks on a daily chart below. You will see almost all the tall volume bars (sticking up above their neighbors) are ... RED, showing higher volume on down days. T

### **HOW TO SEE DISTRIBUTION ON 2-COLOR CHARTS!**

Distribution action is easiest to see when you are on a chart with two color volume lines, usually red for falling price days and green (or blue) for rising days. The fastest way to get a sense of the accumulation/distribution going on in a stock or index is to swing your eyes across the volume bars – noting the color of the highest bars - the red volume bar indicates the price dropped that day. The taller bar indicates the volume was higher. (MarketSmith and other IBD charts have this 2-color feature!

### **REMEMBER:**

**THE MARKET CONTINUES IN THE DIRECTION IT IS GOING,**

**... UNTIL IT DOESN'T!**

>>>>But be sure to watch each stock in your portfolio for additional distribution days to signal an exit point. See selling rules chapter of “How to Make Money in Stocks” by William O’Neil, founder of Investor’s Business Daily.



# THE ARMCHAIR INVESTOR TREND-FOLLOWING STRATEGY

*A Simple and Powerful Tool to Increase Your Returns*

## **Armchair Investor Mantra:**

- **Be IN the market** when it is going up
- **Be OUT of the market** when it is going down
- **Protect your portfolio** with 8% stops.

**The primary purpose of this Armchair Investor newsletter is to let you, the reader, earn bigger returns riding the trend of the market.**

By following the best (most reliable) market change signals, you can:

- **Get in the market near the bottom** of a new bull market
- **Exit the market near the top**, and
  - **Capture more of the gains**,
  - **Avoid more of the losses** and, thus
  - **Earn higher returns** than the “buy-and-hold” strategy recommended by many brokers and money managers!

### **Why a “Buy-and-Hold” strategy doesn’t work well:**

When the market has topped and starts to fall, do you really want to let your profits fade away as the market falls – sometimes for years? Of course not! Selling your uptrend position allows you to capture your gains and store them safely away in cash. What is the right time to exit? This newsletter will show you the market’s signal.

**Most downtrends (also called corrections) fall faster than the uptrends rise.**

***I am not willing to sit in a sick, falling market and lose my hard-earned gains!***

Cash is a safer position!

Here are the three signals I will give you in this newsletter for the three market conditions:

- **Uptrends:** When the market rises into an Uptrend, buy and hold the QQQ, a stock that rises with the general market.
- **Uptrend showing Weakness:** As a market Uptrend starts to fall, you will receive the signal to exit the QQQ and safely wait in cash.
- **Downtrends:** If the market continues down, you will receive a signal to buy the PSQ, a stock that rises while the market falls.

**FINALLY – For individual stocks:** Use these market signals to help you when buying individual stocks. You increase your likelihood of a successful stock purchase if you only buy stocks when the market is in an Uptrend. Lesson: Don’t fight the market trend!

**HOW CAN YOU CAPTURE THOSE?  
GREAT MARKET GAINS SHOWN ABOVE?  
USE THE ARMCHAIR INVESTOR PLAN:  
*It's as easy as 1- 2- 3!***

**STEP 1:** Ride a rising market - hold the QQQ.

**STEP 2:** Protect your investments during a weakening Uptrend

**STEP 3:** Go to cash or PSQ in a falling market.

This newsletter will identify the market direction, (step 1, step 2 or step 3) and explain what you can do to grow and protect your portfolio.

-----

**STEP 1: In an Uptrend, hold the QQQ, a Nasdaq100 ETF**

**Find the market direction diagnosis every night in this newsletter.**

- In the Uptrend, buy the QQQ the next morning if you don't yet have that position. This newsletter will alert you to the Uptrend signal! *The QQQ follows the ups and downs of the Nasdaq100, allowing you to grab the rises of an Uptrend.*
- With some additional positive action, you may decide to switch to the double QQQ ETF (QLD) or triple QQQ (TQQQ). I do not recommend these moves for the first-time investor.

**Just in case protection:** When you receive your confirmation of the purchase, place an **8% STOP LOSS** order to protect your portfolio from a sudden market reversal (executing this sale is rare – I almost always sell when the market goes into “under pressure” or Downtrend – see Step 2 below). Your broker can help you set up this order.

**This upward ride is the most exciting part of trend-following – Ride the escalator up, up, up as the market rises. Exit when the market starts to show significant weakness (read this newsletter nightly!**

**Although not every Uptrend signal generates a positive return, most do.**

## **STEP 2: When the Uptrend slows down: “Uptrend under Pressure”**

“Uptrend under Pressure” is a Warning Message and means:

- The market is showing significant distribution (selling pressure.)  
**Investors should:**
  - **Be concerned about the strength of this Uptrend.**  
During an Uptrend under Pressure, this newsletter may move into CASH position to avoid possible losses.
  - **Check on the health of your investments each night!** Many investors do not buy new stock positions during this period due to higher failure rates.
- **From STEP 2, “Uptrend under Pressure,”** the market diagnosis will go one of two ways:
  - **Rise** with price and volume strength, and return to **Uptrend – (STEP 1)**, or
  - Continue to add more distribution days and **fall** into a **Downtrend (correction)**
- This is a time to pay attention to the market behavior.

## **STEP 3: When the market diagnosis goes to “Downtrend”**

**Capture much of the gains from the Uptrend by selling your Uptrend ETF position (QQQ, QLD or TQQQ) when the market diagnosis goes into Downtrend to capture much of the gains earned in Steps 1 & 2 above.**

**After exiting the Uptrend ETF, wait in cash** until the next Uptrend signal. More recent Downtrends have been short term and not tradable.

**The Uptrend has been years long and strong. The market is due for a long dive. I will invest in the PSQ (inverse QQQ) ETF which makes profits as the market falls!**

**NOTE:** Not every market direction signal end with a positive return. But overall, this Market Tracking Strategy has outperformed the market when traded according to these signals.

**BONUS:** Plus, the market direction signals will help you by indicating when it is most effective to consider adding individual stocks to your portfolio (with a strong uptrending market).

## **DO YOU INVEST IN INDIVIDUAL STOCKS?**

**Always consider taking some profit if significant distribution is showing up for your individual stocks.** However, many individual stocks are rising with gusto! Look at all the lists in the Investor's Business Daily newspaper for stocks breaking out with high volume. **They are there!**

**To get a deeper sense of the health of the market, look at the MARKET FACTORS, COUNTS & RATINGS table** included each day in the FULL Armchair Investor newsletter. It looks at 7 key market direction factors and highlights the leaning of each:

- If the factor leans toward the **Uptrend**, that box will be **green**
- If the factor leans toward the **Downtrend**, that box will be **orange** or **red**

**To schedule a class visit: Contact Charlotte Hudgin at 214-995-6702**

One of the reasons I pay so much attention to the Investor's Business Daily strategies and books (*How to Make Money in Stocks* series) is that they have work consistently for the 30 years I have referred to them.

### **Visit an ARMCHAIR INVESTOR CLASS**

**We have 3 live classes given live most weeks. These classes will be given ONLINE until we are cleared to meet in person. Visit any class this week and next as my guest (2 free visits!).** NOTE: We are on vacation the last 2 weeks in December. *If you are a subscriber, or have a relatively short question, call me anyway!* (I'm mostly hanging around the house.) The underlined phrases below are live links!

Register at the [Armchair Investor Meetup class site](#) to join the class you are interested in. Click on one of the links below to register. I occasionally take off for a class (or a week of them) for my own education or fun. If that is the case, those days will not be available for registration on Meetup.

- [Introduction to 5- minute investing Sundays 7 – 8 p.m.](#)
- [Monday night's 7 – 9 p.m.](#)
- [Tuesday afternoons 2:30 – 4:30 p.m.](#)
- [Wednesday mornings 10:00 a.m. to noon](#)
- All Classes meet ONLINE (during this "stay at home" time).
- Online classes and consultations available by appointment – **Call me for a FREE introduction!**

### **Newsletter readers get a FREE class visit:**

Monday evening, Tuesday afternoon or Wednesday morning online.  
Register on Meetup.com or call or text me to set up your visit.

### **Pre-REGISTRATION REQUIRED FOR YOUR FREE VISIT**

**Just Call or Text me: 214-995-6702**

**CALL EARLY: Guest Seating is limited.**

## 2022 THE MARKET HOLIDAY SCHEDULE

I'm updating my 2022 spreadsheet and calendars to note the days the market is closed and has an early close and will update the newsletter next week.

**NOTE: There will be no market holiday around the Saturday 2022 New Year's day this year.**

---

The Nasdaq Stock Market and New York Stock Exchange (NYSE) close for nine holidays each year and two "early closure" days (sometimes misnamed "half days"):

Here is the 2022 holiday closure schedule for the NYSE and Nasdaq:

Holiday	2022
New Year's Day	Monday, January 2
Martin Luther King, Jr. Day	Monday, January 17
Washington's Birthday	Monday, February 21
Good Friday	Friday, April 15
Memorial Day	Monday, May 30
Juneteenth National holiday	Monday, June 20 holiday
Independence Day	Monday, July 4
Labor Day	Monday, September 5
Thanksgiving Day	Thursday, November 24*** Plus "early close" on Friday November 25
Christmas Day	Monday, December 26 (Christmas holiday observed)
New Year's Day 2023	Monday 1/2/2023

On regular trading days, the main trading session runs the normal schedule of 9:30 a.m. to 4 p.m. (New York City time, i.e., Eastern time)

On early close trading days, the main trading session runs from 9:30 a.m. to 1 p.m. ET.

When a holiday falls on a Saturday, the NYSE and Nasdaq close on the Friday before. Holidays that land on a Sunday are observed on the following Monday.

## Are you NEW to the Armchair Investor?

Access the FULL ARMCHAIR Investor newsletter each night in just 2 clicks:

[WWW.ARMCHAIRINVESTOR.COM](http://WWW.ARMCHAIRINVESTOR.COM)

The go down to the bottom of the page – click on **ARCHIVE**

The **Archive will be open** until we work out the new **subscription-only** access system.

To guarantee your continued access to this newsletter, sign up for a newsletter subscription or for the weekly classes (which include the newsletter)

Wishing you "**Many Happy Returns,**"

Charlotte Hudgin, 214-995-6702, Editor, the Armchair Investor

### **DISCLAIMER, "Buyer Beware" WARNING:**

This newsletter shares the ideas I use in my investing.  
It is not investing advice but should be taken as education only.  
Your investment decisions are your responsibility as are the results.  
If you are not comfortable with or do not understand a strategy completely,  
I recommend that your paper-trade until you are successful and can sleep well at night.

**Call me to explore your investing questions!**

**Charlotte Hudgin, 214-995-6702**

**See additional definitions on the following pages....**

## Is this market “Climbing a Wall of Worry”

### DO INVESTORS IN INDIVIDUAL STOCKS BEAT THE MARKET?

The research shows [Most investors didn't come close to beating the S&P 500](#) (as stated by CNBC.)

**But what you should really be concerned about is ....IS THIS MARKET HEALTHY? My answer: Follow the accumulation and distribution days!**

- A market with **just a few distribution days** in since the last market **UPTREND** showing **broad market buying**. Then look for **distribution days**. You can see just one since the new Uptrend. See the **MARKET ACTION (Nasdaq) OVER THE LAST 20 DAYS** table.
- Explanation: When an index rises 5% or more above the close of a distribution day, then that day is considered, “NO LONGER RELEVANT!” The market is hot-dogging higher and those distribution days are long gone from the rear-view mirror.
- A steadily rising market is more sustainable! Watch for additional distribution days.
- **The current up-channel is not quite as steep as last year's 5-month rising channel. That could mean that it won't last as long. Or that, because of the gentler rise, it will last longer.**

How long will the rise run? (You know my answer: The market will continue higher until..... it doesn't.)

**with explanation of terms and signals:**

## **DO YOU INVEST IN INDIVIDUAL STOCKS?**

**Always consider taking some profit if significant distribution is showing up for your individual stocks.** However, many individual stocks are rising with gusto! Look at all the lists in the Investor's Business Daily newspaper for stocks breaking out with high volume. **They are there!**

To get a deeper sense of the health of the market, look at the **MARKET FACTORS, COUNTS & RATINGS table** included each day in the FULL Armchair Investor newsletter. It looks at 7 key market direction factors and highlights the leaning of each:

- If the factor leans toward the **Uptrend**, that box will be **green**
- If the factor leans toward the **Downtrend**, that box will be **orange** or **red**

**To schedule a class visit: Contact Charlotte Hudgin at 214-995-6702**

One of the reasons I pay so much attention to the Investor's Business Daily strategies and books (*How to Make Money in Stocks series*) is that they work consistently.

### **Visit an ARMCHAIR INVESTOR CLASS**

We have 3 live classes given each week in Dallas and one on-demand ONLINE class. Visit a class as my guest (NOTE: Monday night is moving to another day - I don't know when yet.

- [Monday nights, 7 – 9 p.m.](#)
- [Tuesday afternoons 2:30 – 4:30 p.m.](#)
- [Wednesday mornings 10:00 a.m. to noon](#)
- Classes meet ONLINE. When the virus risk is past some classes will resume in north Dallas.
- Online classes and consultations available by appointment – **Call me for a FREE introduction!**

**Newsletter readers get a FREE class visit:**

Monday evening, Tuesday afternoon or Wednesday morning in Dallas.  
Call or text me to set up your visit.

**Pre-REGISTRATION REQUIRED FOR YOUR FREE VISIT**

Just Call or Text me: 214-995-6702

**CALL EARLY: Seating is limited to no more than 3 guests at each session to ensure the paid subscribers receive full value.**